

Campaign Catch Up



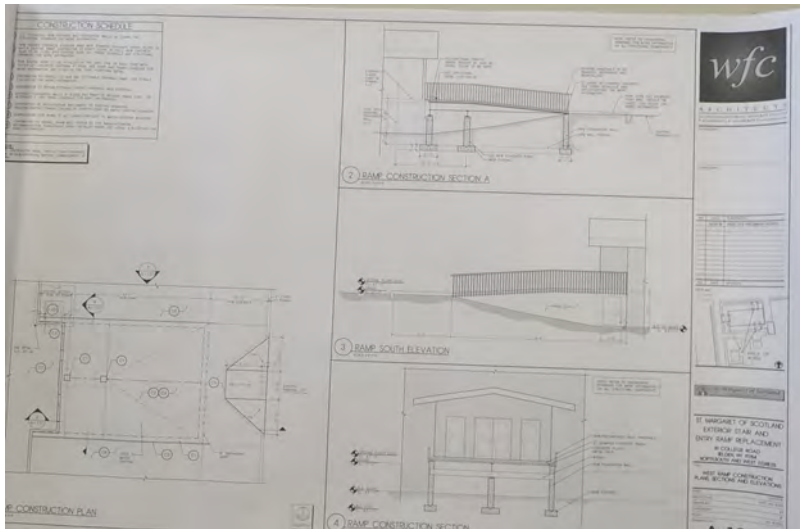
June 24, 2018

Vol I Edition 24

Total Pledged: \$808,115

10% 20% 30% 40% 50% 60% 70% 80% 90% 100%

Contractors' Site Review Done



We have passed the \$800,000 mark!! Thanks to all who have pledged and a special thanks the 3 **families** whose pledges helped us past that point. As of Monday, **361 households** have offered their financial support. Each pledge makes a difference.

Please remember:

- * Pledges can be made over a period of three or four years.
- * Pledge payments are in addition to your weekly offertory.
- * All contributions are tax deductible.
- * Make checks payable to: St. Margaret's Capital Campaign

Seven contractors gathered this past Wednesday for the site walk through for our first Campaign project: replacement of our front entrance bridge. The architect, a representative from the Diocese and Mike Lorio (our Facilities Manager) were there to answer any questions. Each contractor received a bid package with all the specs for the project. They have several weeks to review and submit questions. We will then evaluate the bids submitted by the deadline in conjunction with the Diocesan Building Office. The company we select will work with us to set the actual construction schedule, which we will share with you.

Equal Sacrifice,
Not Equal Giving

Proposed Schedule of Work

PHASE I **Fall 2018**

Approximate Cost: \$450,000

- Replace the Church Entrance Bridge and Side Stairways
- Mandated Removal of the oil tank in the Parish Center and replace the Boiler

- Update the Kitchen in the Auditorium

PHASE II **Fall 2019**

Approximate Cost: \$290,000

- Update Auditorium Bathrooms and Replace Parish Center's Handicapped lift
- Add Handicapped Parking spaces and Re-coat & re-stripe the Parking lot
- Install new padding on the kneelers

PHASE III **Fall 2020**

Approximate Cost: \$210,000

- Update Fire and Security Alarm systems in the Church and Parish Center
- Replace the Sidewalks
- Replace the Windows in the Parish Center

Funded

Pledged

Unfunded