

Campaign Catch Up



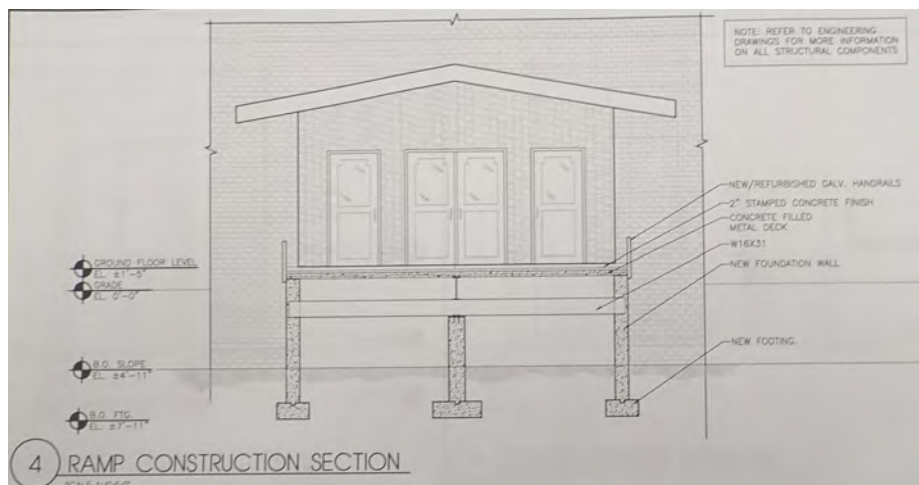
July 8, 2018

Vol I Edition 26

Total Pledged: \$817,858

10% 20% 30% 40% 50% 60% 70% 80% 90% 100%

Contractors' Bids Due This Week



We continue past the \$810,000 mark. Thanks to all who have pledged and a special thanks to the **3 families** whose pledges recently arrived. As of last Monday, **370 households** have offered their financial support. Each pledge makes a difference.

Please remember:

- * Pledges can be made over a period of three or four years.
- * Pledge payments are in addition to your weekly offertory.
- * All contributions are tax deductible.
- * Make checks payable to: St. Margaret's Capital Campaign

The contractors came on June 20th for the site inspection of our first project: replacement of our front entrance bridge. The deadline for submitting their proposals and bids was set by the Diocese for this past week. Once the Diocese has received the bids, they send them to us to review. They also will assess all the bids and offer their recommendations. The next step will be to arrange preliminary meetings with the contractors we agree on. After that, a decision is made in conjunction with the Diocesan Building Office. The company we select will work with us to set the actual construction schedule, which we will share with you.

Equal Sacrifice,
Not Equal Giving

Proposed Schedule of Work

PHASE I Fall 2018

Approximate Cost: \$450,000

- Replace the Church Entrance Bridge and Side Stairways
- Mandated Removal of the oil tank in the Parish Center and replace the Boiler

- Update the Kitchen in the Auditorium

PHASE II Fall 2019

Approximate Cost: \$290,000

- Update Auditorium Bathrooms and Replace Parish Center's Handicapped lift
- Add Handicapped Parking spaces and Re-coat & re-stripe the Parking lot
- Install new padding on the kneelers

PHASE III Fall 2020

Approximate Cost: \$210,000

- Update Fire and Security Alarm systems in the Church and Parish Center
- Replace the Sidewalks
- Replace the Windows in the Parish Center

Funded

Pledged

Unfunded